

# Ficha Casa Prototipo Eafit

Diseño: Dos prismas regulares, unidos por un espacio en comun, lo que permite sacar mayor partido en Fachada y asoleamiento de las mismas. Se define un modulo espacial de 3m<sup>3</sup> , que a la vez funciona como modulo estructural y permite replicarse buscando mayor área,o diversidad geometrica.

Área Casa: 54m<sup>2</sup>

Área Efectiva: 52,2 m<sup>2</sup> (sin columnas ni, muros)

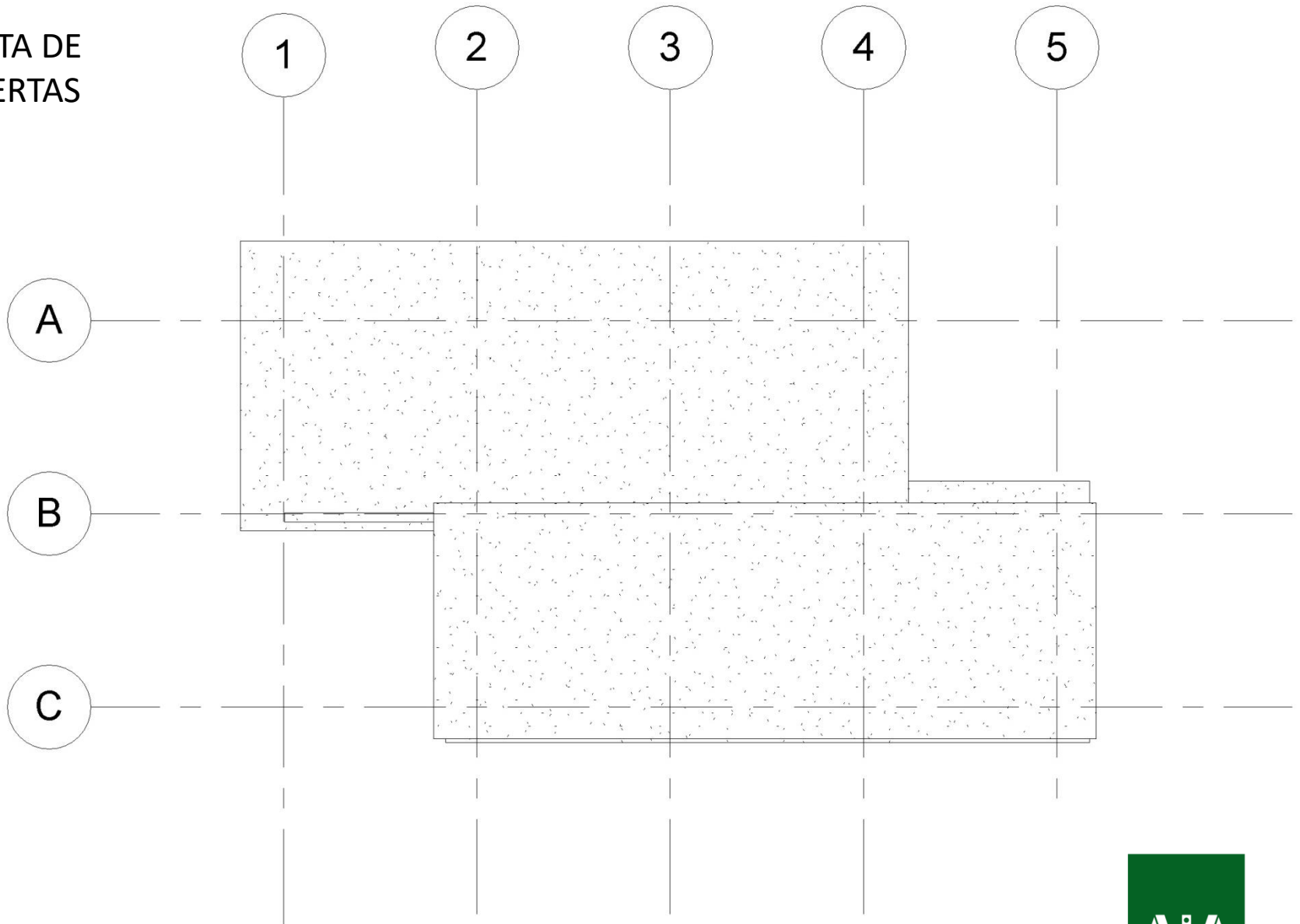
Área en Fachada: 35,37 Fachada Oriental

33,28 Fachada Occidental

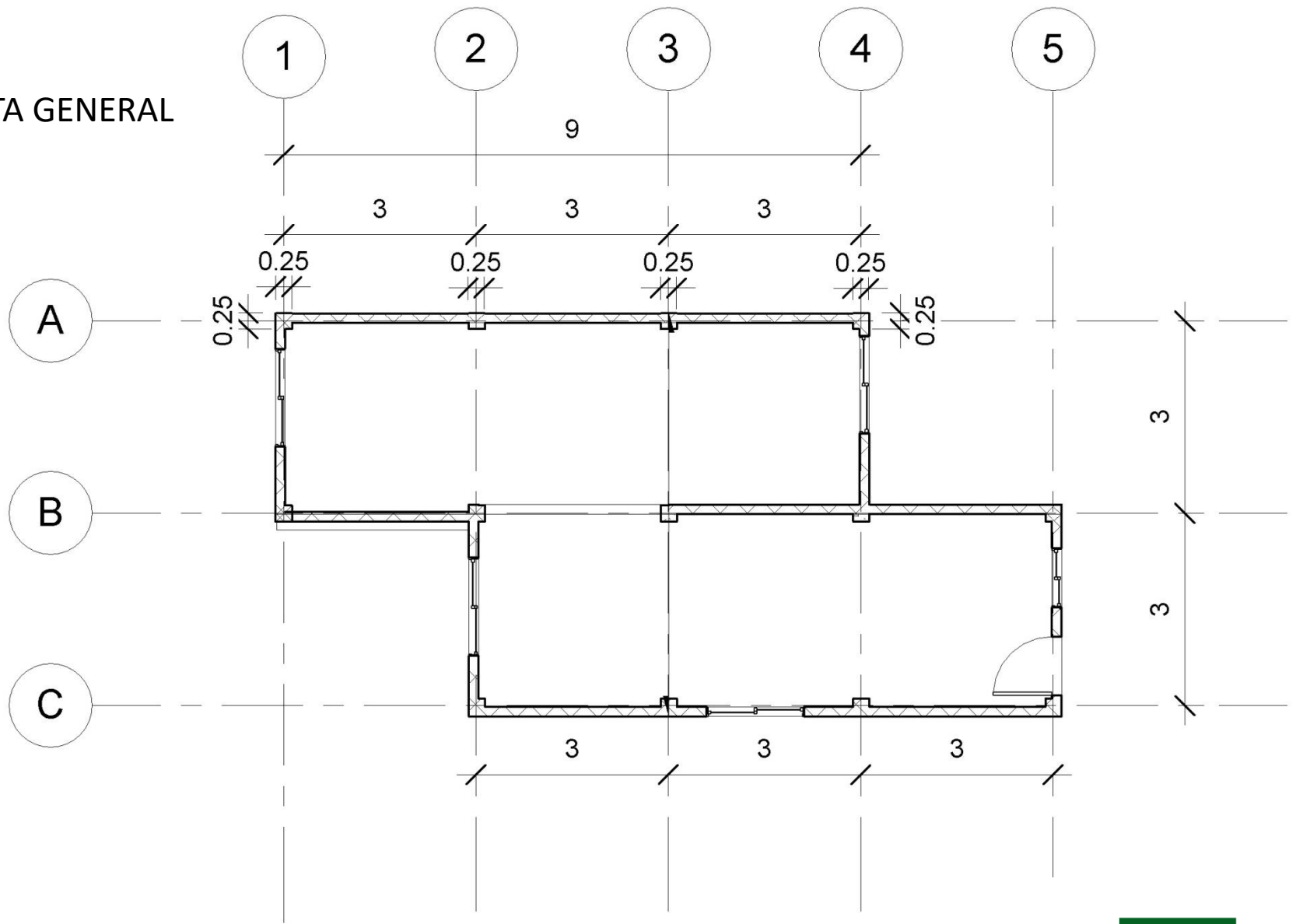
Área Total en Fachada: 68,65 m<sup>2</sup>

Área Requerida en Fachada para satisfacer demanda energética : 37m<sup>2</sup>

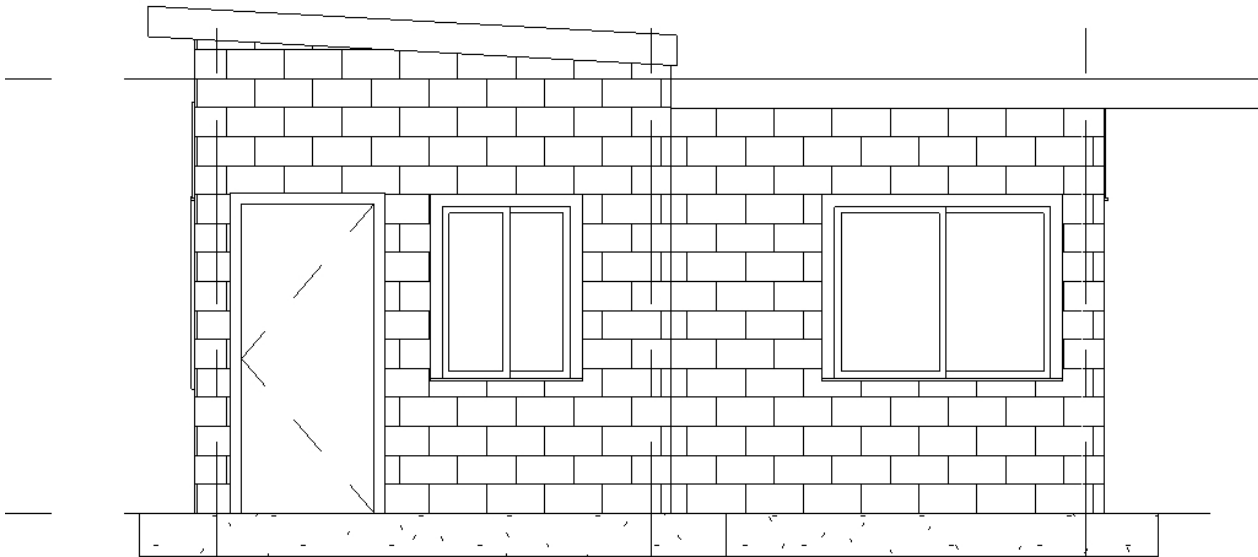
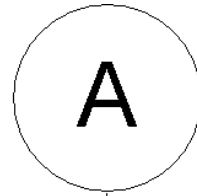
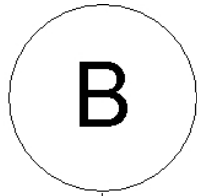
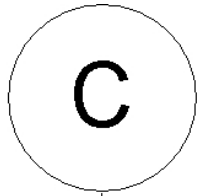
PLANTA DE  
CUBIERTAS



# PLANTA GENERAL



FACHADA NORTE



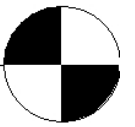
Level 2

3

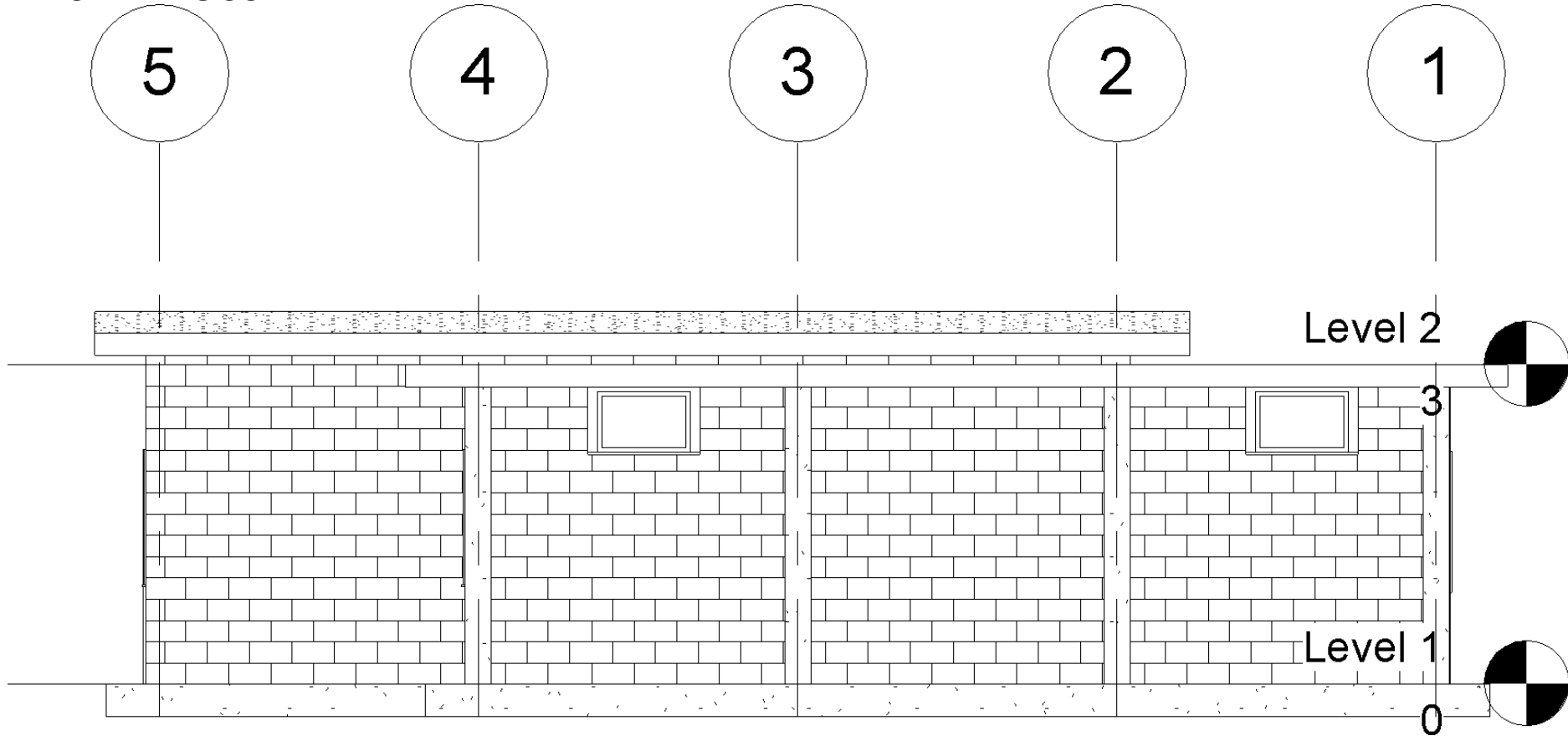


Level 1

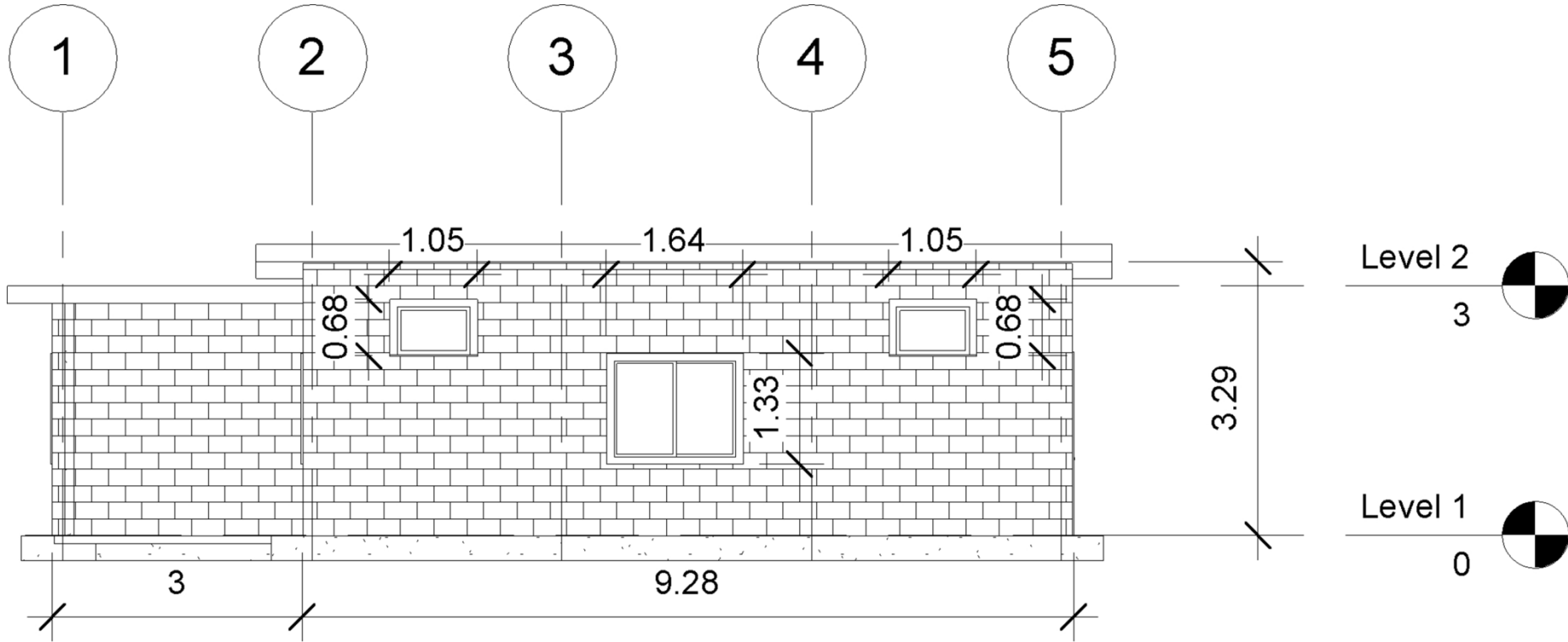
0



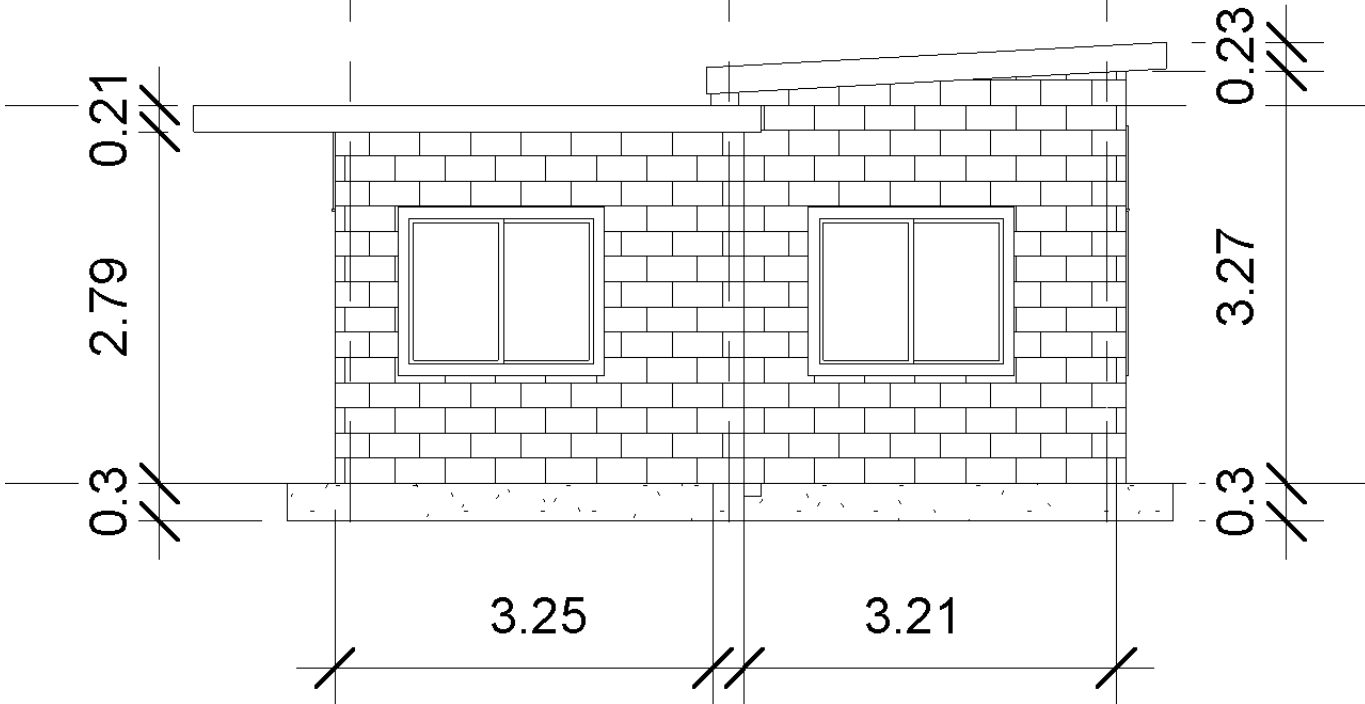
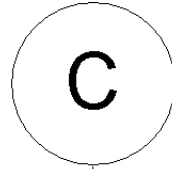
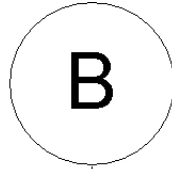
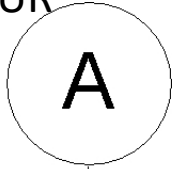
FACHADA OCCIDENTAL



# FACHADA ORIENTAL



FACHADA SUR



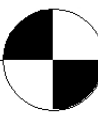
Level 2

3

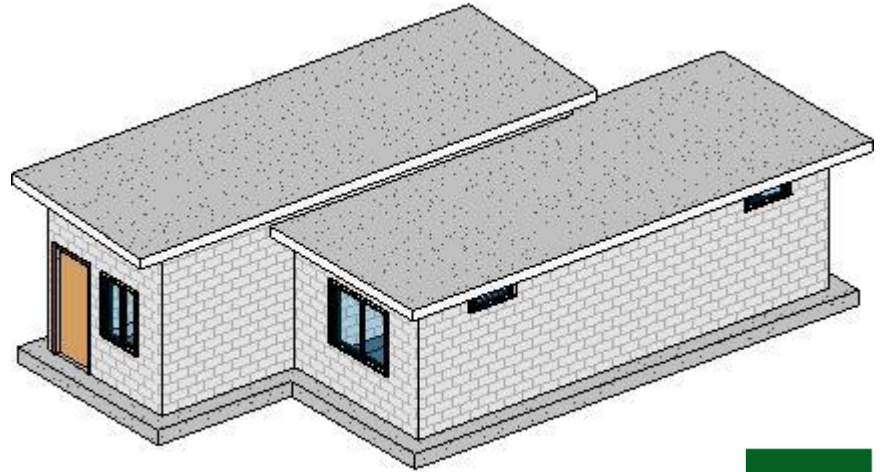
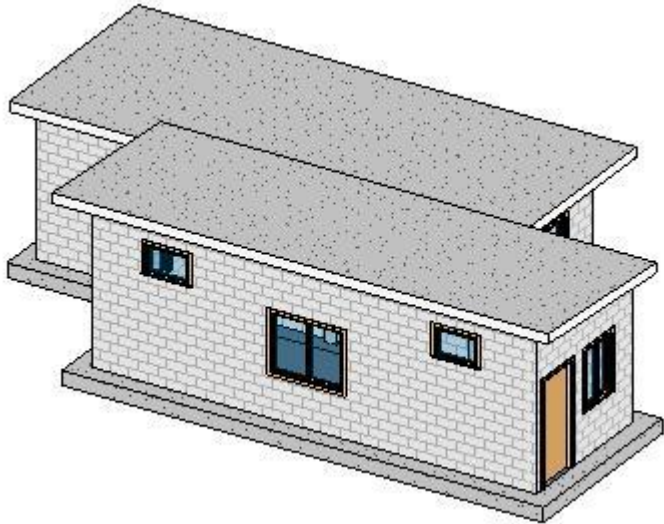
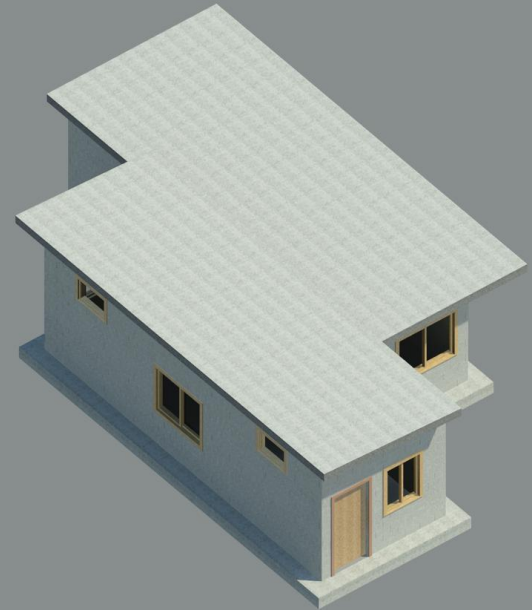
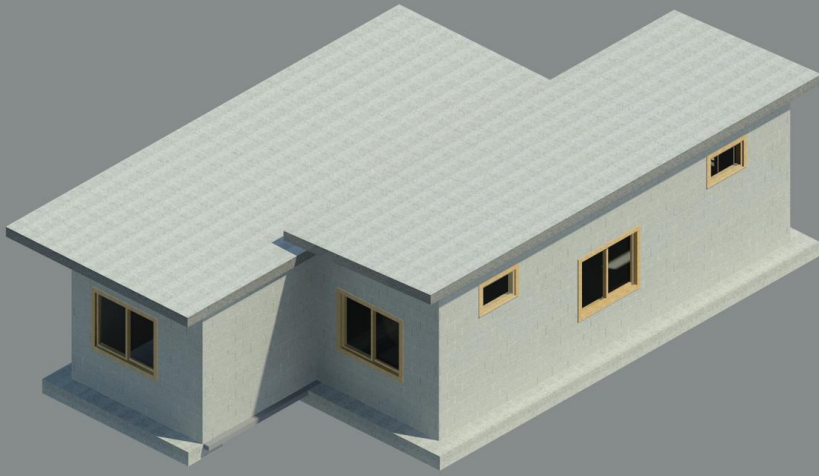


Level 1

0



3D



*Arq. Yamidt de J. Tamayo P.*



CONSTRUIMOS POR NATURALEZA